

We are flying



DAC

ONLINE NEW



DACNEW LES 20230511A

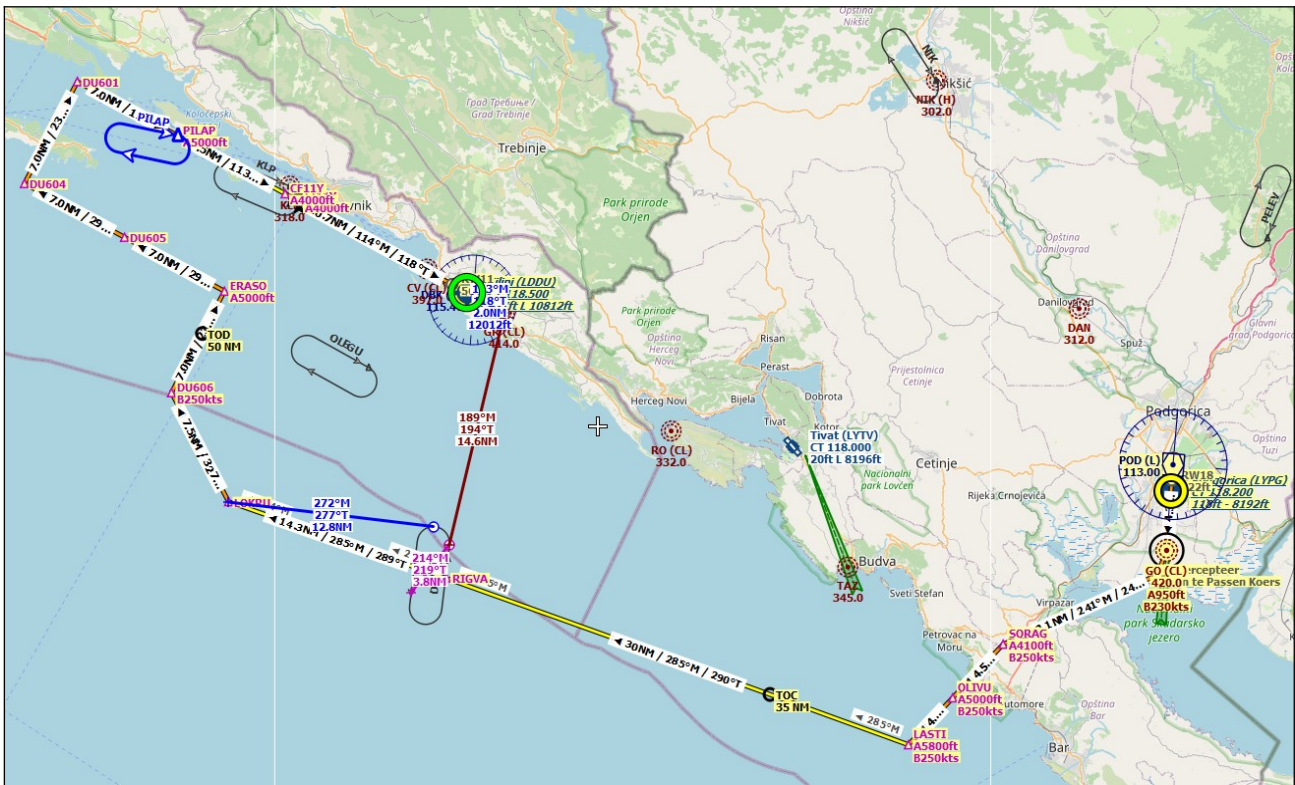
OEFENING : ATC procedure met App Holding en Missed Approach Holding

DEP LYPG RWY 18 SID LIST 1G

ARR LDDU RWY 11 STAR LOKR ZZ - ILS Y11 - 110.10 / 114° M GS 3.0°

ATC Dubrovnic Radar - Information Uniform

Fair weather - Lct 12:00 at 19:30 - FL160 - PFL 4000 ft

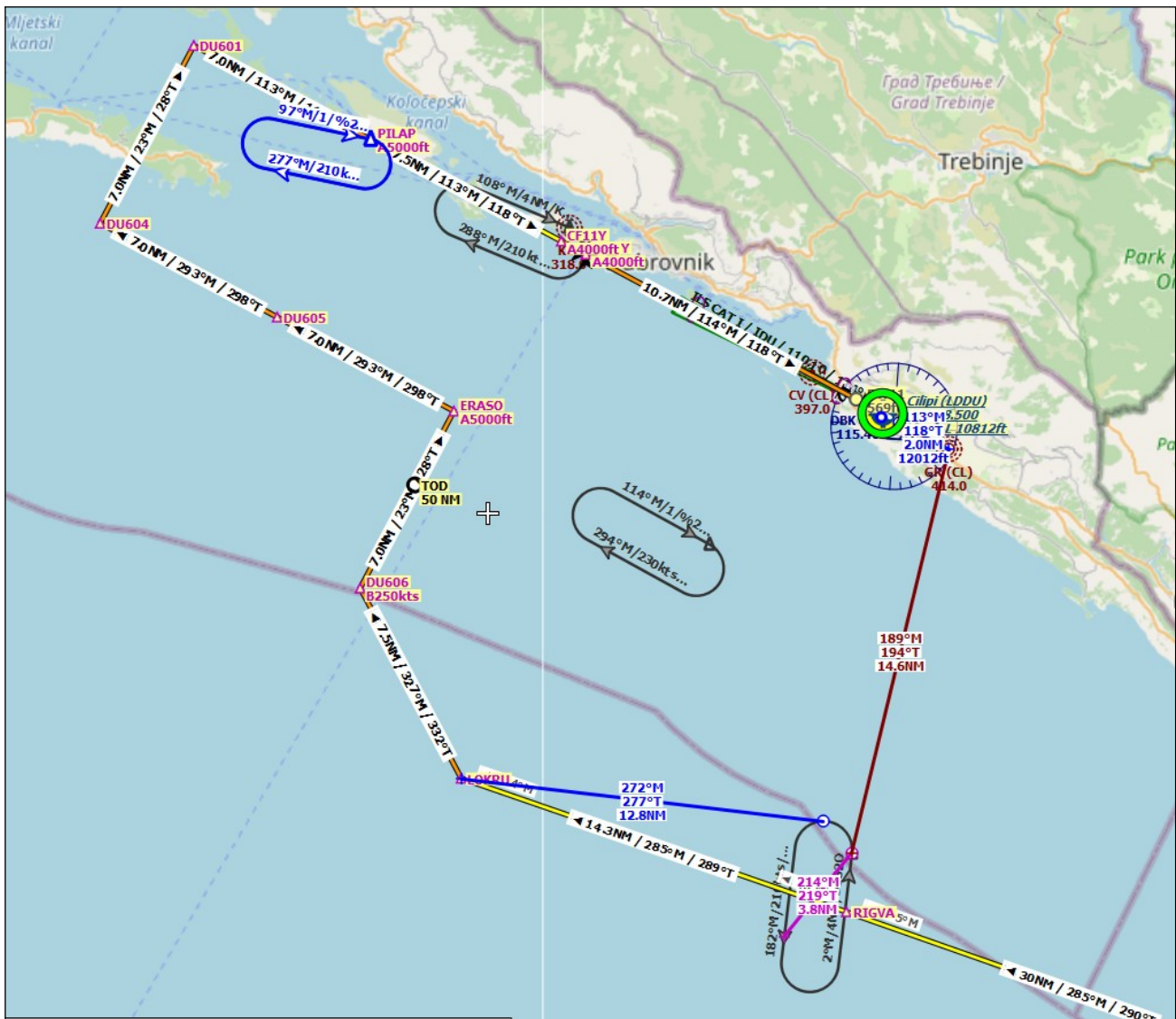


APP HOLDING PILAP

Right
097°
210 knts
1 min
5000 ft

MISSED APP HOLDING D1820

Left
002°
210 knts
1 min
4000 ft



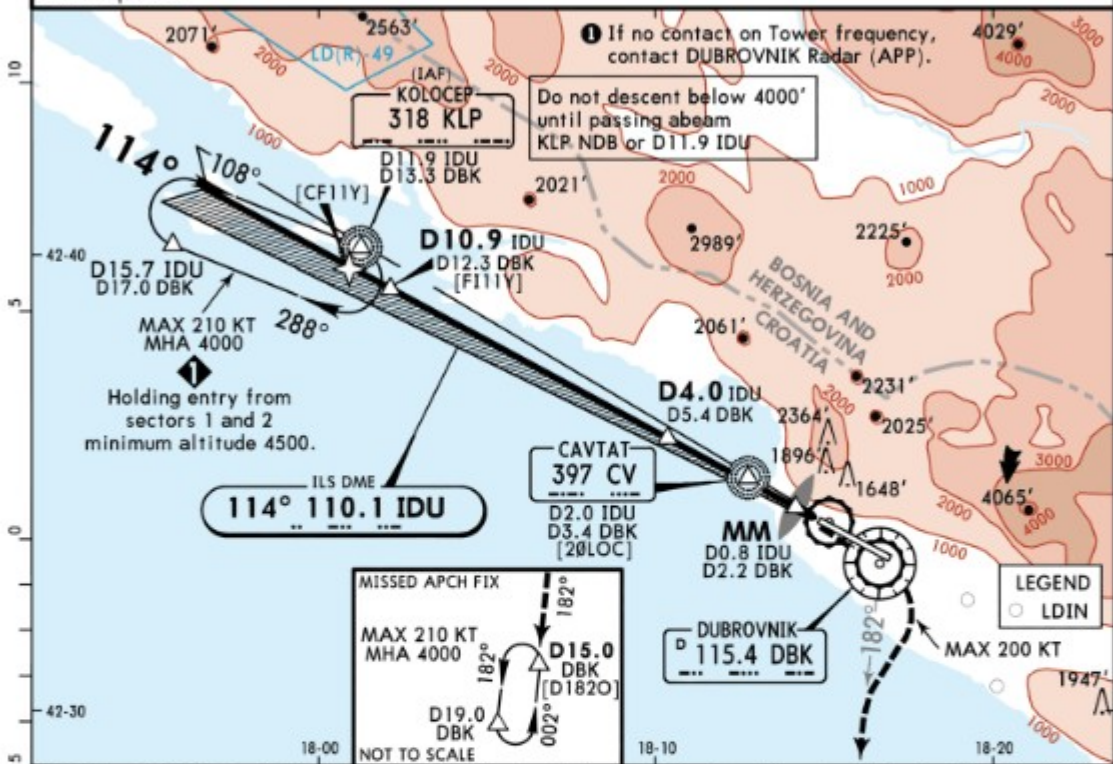
	Ident	Name	log ove NM	Hoogte ft
1	◆	LYPG Podgorica	132	122
2	○	RW18	131	122
3	⊙	GO Podgorica	127	2.134
4	▲	SORAG	115	7.764
5	▲	OLIVU	110	9.881
6	▲	LASTI	106	11.737
7	▲	RIGVA	76	16.000
8	▲	LOKRU	62	16.000
9	▲	DU606	54	16.000
10	▲	ERASO	47	15.111
11	▲	DU605	40	12.984
12	▲	DU604	33	10.856
13	▲	DU601	26	8.725
14	▲	PILAP	19,2	6.597
15	▲	CF11Y (FACF)	11,7	4.309
16	▲	FI11Y (FAF)	10,7	4.000
17	○	RW11 (MAP)	0,0	569
18	○			
19	▲	D1820		
20	▲	D1820		
21	◆	LDDU Cilipi		569

LDDU/DBV
CILIP1

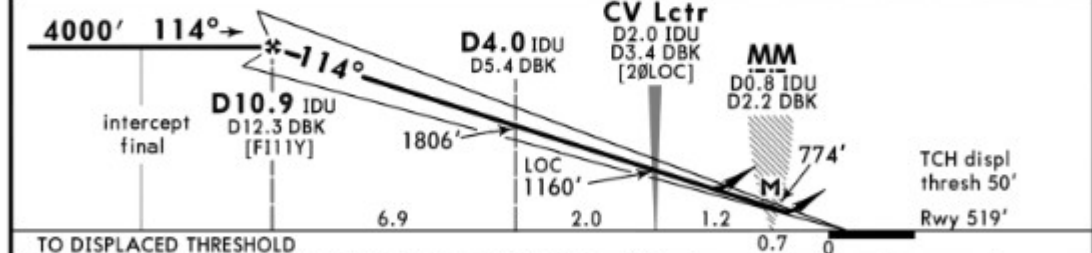
JEPPESEN
26 AUG 22
Eff 8 Sep (11-2)

DUBROVNIK, CROATIA
ILS Y or LOC Y Rwy 11

ATIS 118.425		DUBROVNIK Radar (APP) 123.6 125.4		DUBROVNIK Tower 129.5 125.4		
LOC IDU 110.1	Final Apch Crs 114°	D10.9 IDU 4000' (3481')	ILS DA(H) Refer to Minimums	Apt Elev 527' Rwy 519'		
MISSED APCH: Climb STRAIGHT AHEAD, at 970' turn RIGHT, (MAX 200 KT) intercept R-182 DBK outbound, climbing to 4000' and hold.						
Alt Set: hPa		Rwy Elev: 19 hPa		Trans level: By ATC		Trans alt: 10000'
DME required.						



LOC (GS out)	IDU DME	10.0	9.0	8.0	7.0	6.0	5.0	4.0	3.0	2.0
ALTITUDE		3710'	3390'	3070'	2750'	2430'	2120'	1800'	1480'	1160'



Gnd speed-Kts	70	90	100	120	140	160	HIALS PAPI 	970' ↑ 200 KT MAX 4000' RT DBK 115.4 R-182	
ILS GS	3.00°	372	478	531	637	743			849
LOC Descent Angle	3.01°	373	479	532	639	745			852
MAP at MM/D0.8 IDU/D2.2 DBK									

Standard				STRAIGHT-IN LANDING RWY 11			
ILS DA(H) AB: 719' (200')		C: 726' (207')		D: 736' (217')		LOC (GS out) CDFA DA/MDA(H): 870' (351')	
FULL		ALS out				ALS out	
A							RVR 1500m
B	RVR 550m		RVR 1200m		RVR 900m		RVR 1600m
C							
D							

RVR 750m when a Flight Director or Autopilot or HUD to DA is not used.

Chart linked to: AIRPRO