

We are flying



# DAC

# ONLINE NEW



## DACNEW LES 20230525A

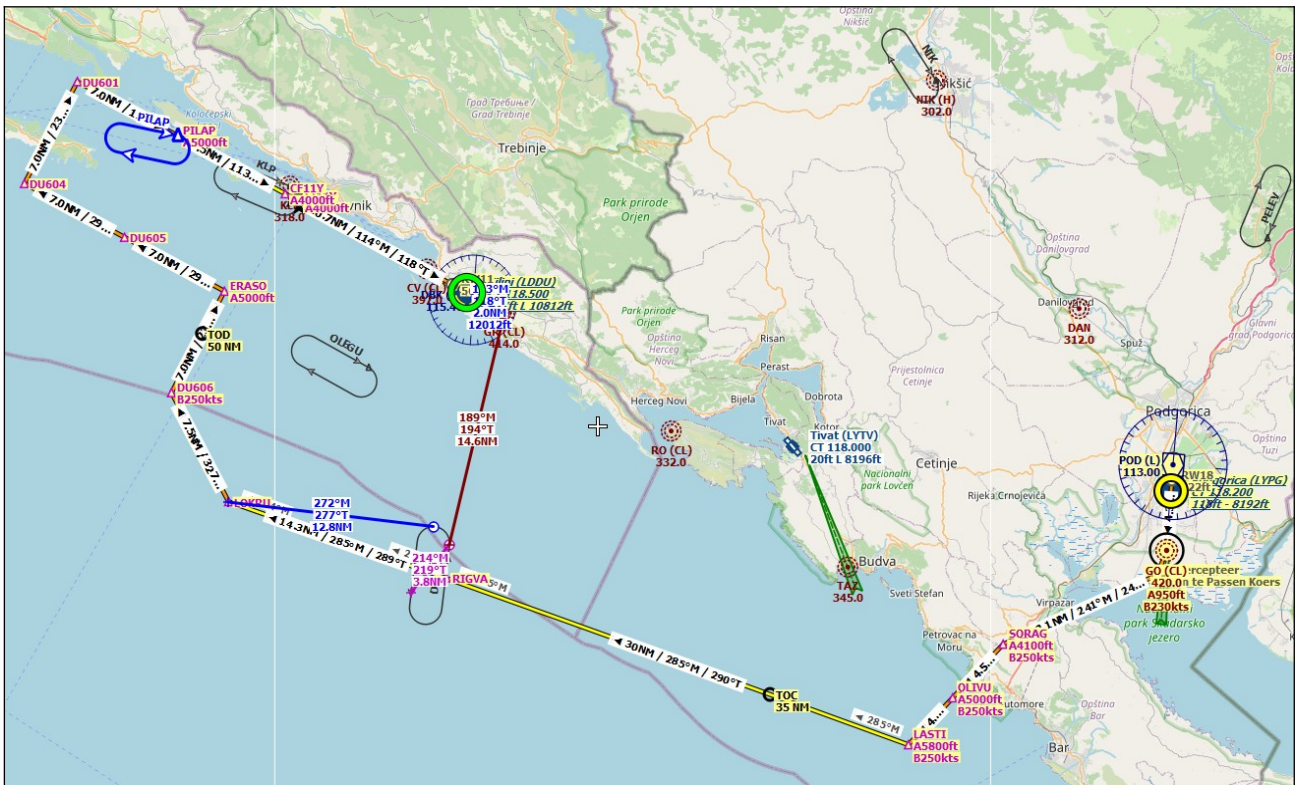
### OE FENING : ATC procedure met App Holding en Missed Approach Holding

DEP **LYPG** RWY 18 SID LAST 1G

ARR **LDDU** RWY 11 STAR LOKR 2Z - ILS Z 11 - 110.10 / 114° M GS 3.0°

ATC **Dubrovnic Approach** - Information Uniform

Fair weather - LCT 12:00 at 19:30 - FL160 - TA 10000 ft - TL 100 - PFL 4000 ft

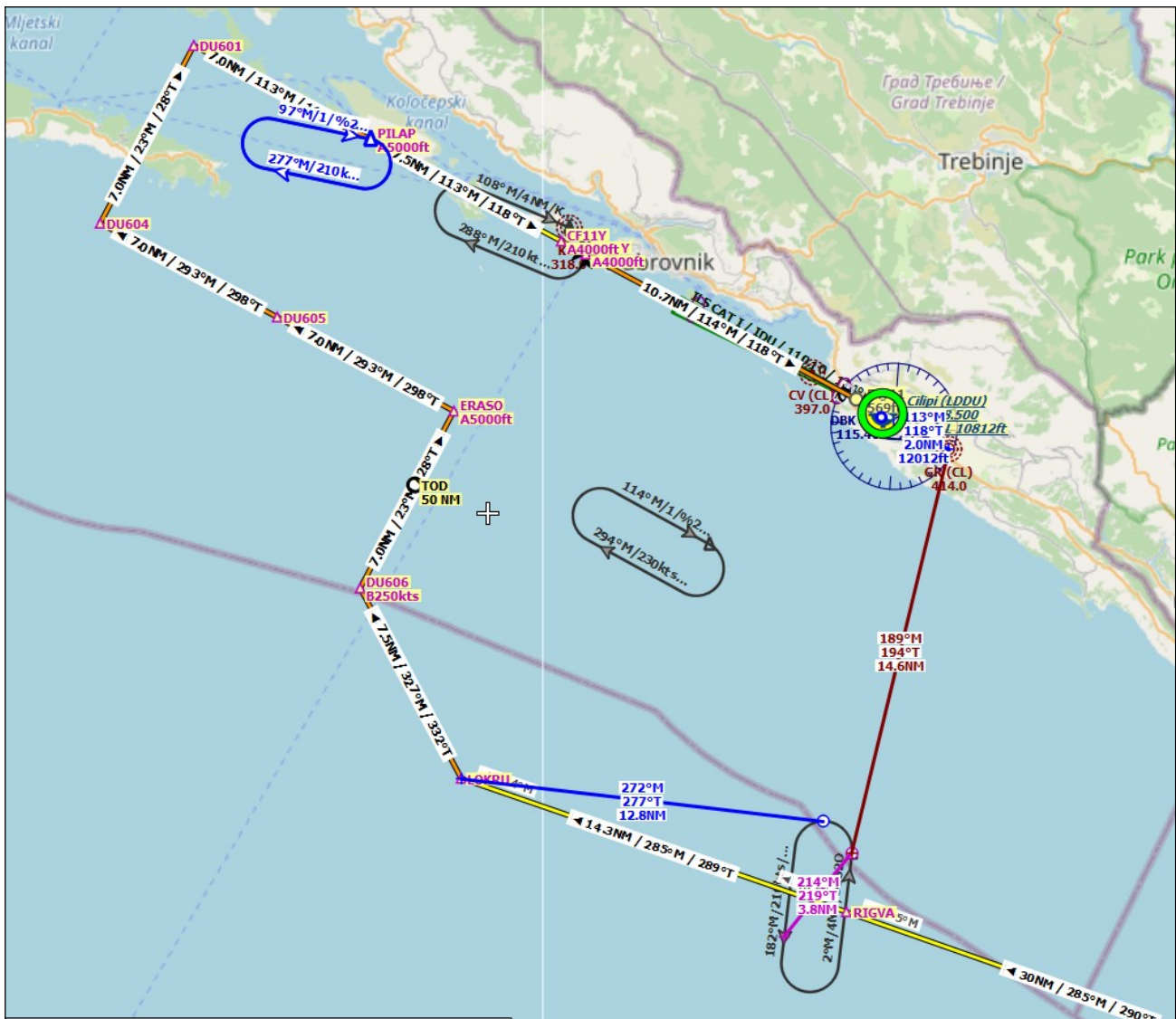


### APP HOLDING PILAP

- Right
- 97°
- 210 knts
- 1 min
- 5000 ft

### MISSED APP HOLDING D1820

- Left
- 002°
- 210 knts
- 1 min
- 4000 ft



	Ident	Name	log ove NM	Hoogte ft
1	◆	<b>LYPG</b> Podgorica	132	122
2	○	<b>RW18</b>	131	122
3	⊙	<b>GO</b> Podgorica	127	2.134
4	▲	<b>SORAG</b>	115	7.764
5	▲	<b>OLIVU</b>	110	9.881
6	▲	<b>LASTI</b>	106	11.737
7	▲	<b>RIGVA</b>	76	16.000
8	▲	<b>LOKRU</b>	62	16.000
9	▲	<b>DU606</b>	54	16.000
10	▲	<b>ERASO</b>	47	15.111
11	▲	<b>DU605</b>	40	12.984
12	▲	<b>DU604</b>	33	10.856
13	▲	<b>DU601</b>	26	8.725
14	▲	<b>PILAP</b>	19,2	6.597
15	▲	<b>CF11Y (FACF)</b>	11,7	4.309
16	▲	<b>FI11Y (FAF)</b>	10,7	4.000
17	○	<b>RW11 (MAP)</b>	0,0	569
18	○			
19	▲	<b>D1820</b>		
20	▲	<b>D1820</b>		
21	◆	<b>LDDU</b> Cilipi		569

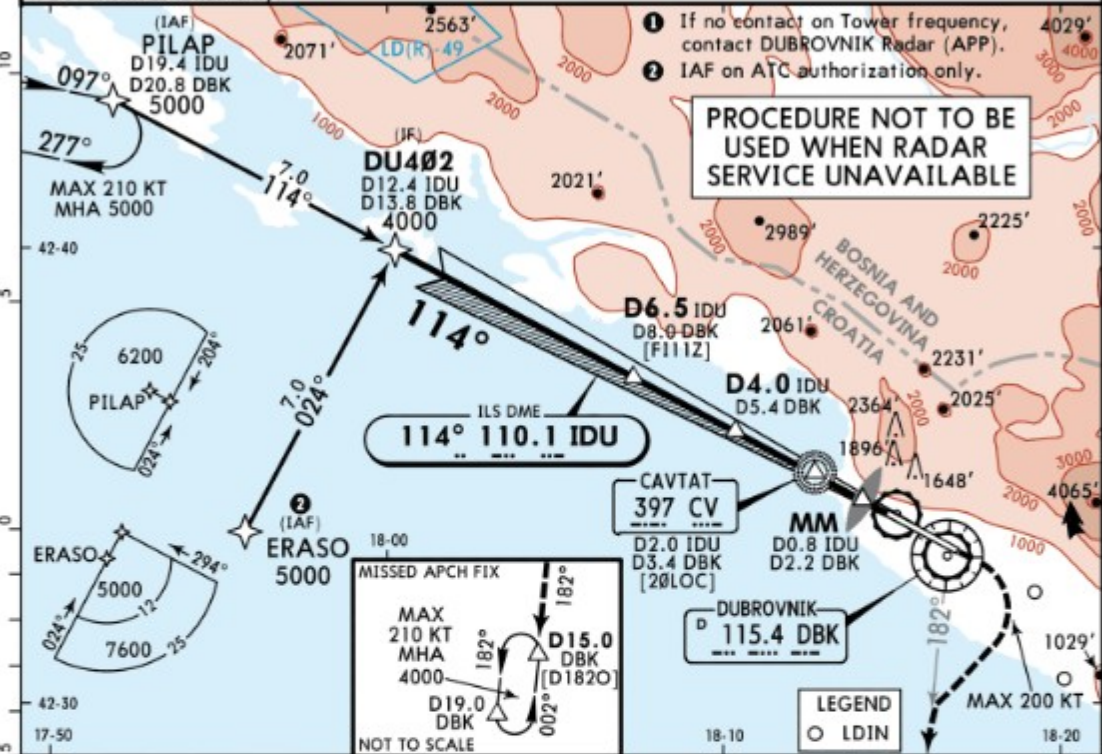


LDDU/DBV  
CILIP1

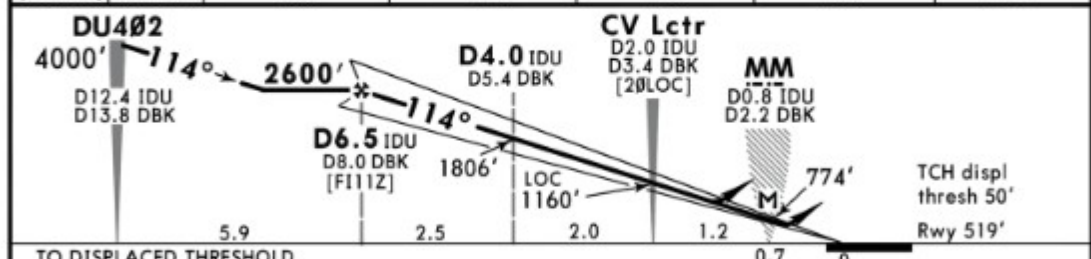
26 AUG 22  
Eff 8 Sep  
JEPPesen  
11-1

DUBROVNIK, CROATIA  
ILS Z or LOC Z Rwy 11

ATIS 118.425		DUBROVNIK Radar (APP) 123.6 125.4		DUBROVNIK Tower ① 129.5 125.4		TAA 25 NM IAF
LOC IDU 110.1	Final Apch Crs 114°	D6.5 IDU 2600' (2081')	ILS DA(H) Refer to Minimums	Apt Elev 527' Rwy 519'		
<b>MISSED APCH:</b> Climb STRAIGHT AHEAD, at 970' turn RIGHT (MAX 200 KT), intercept R-182 DBK outbound, climbing to 4000' and hold.						
Alt Set: hPa		Rwy Elev: 19 hPa		Trans level: By ATC		Trans alt: 10000'
1. RNAV 1 (GNSS only). 2. DME required for ILS and LOC approach only.						
TAA for FIR ZAGREB only.						



LOC	IDU DME	6.0	5.0	4.0	3.0	2.0
(GS out)	ALTITUDE	2430'	2120'	1800'	1480'	1160'



ILS	LOC (GS out)
DA(H) C: 726' (207') AB: 719' (200') D: 736' (217')	CDFA DA/MDA(H) 870' (351')
FULL	ALS out

A			RVR 1500m
B	RVR 550m ①	RVR 1200m	RVR 900m
C			RVR 1600m
D			

① RVR 750m when a Flight Director or Autopilot or HUD to DA is not used.  
CHANGES: Circling withdrawn. © JEPPesen, 2021, 2022. ALL RIGHTS RESERVED.