



ONLINE NEW



### DACNEW LES 20230608A

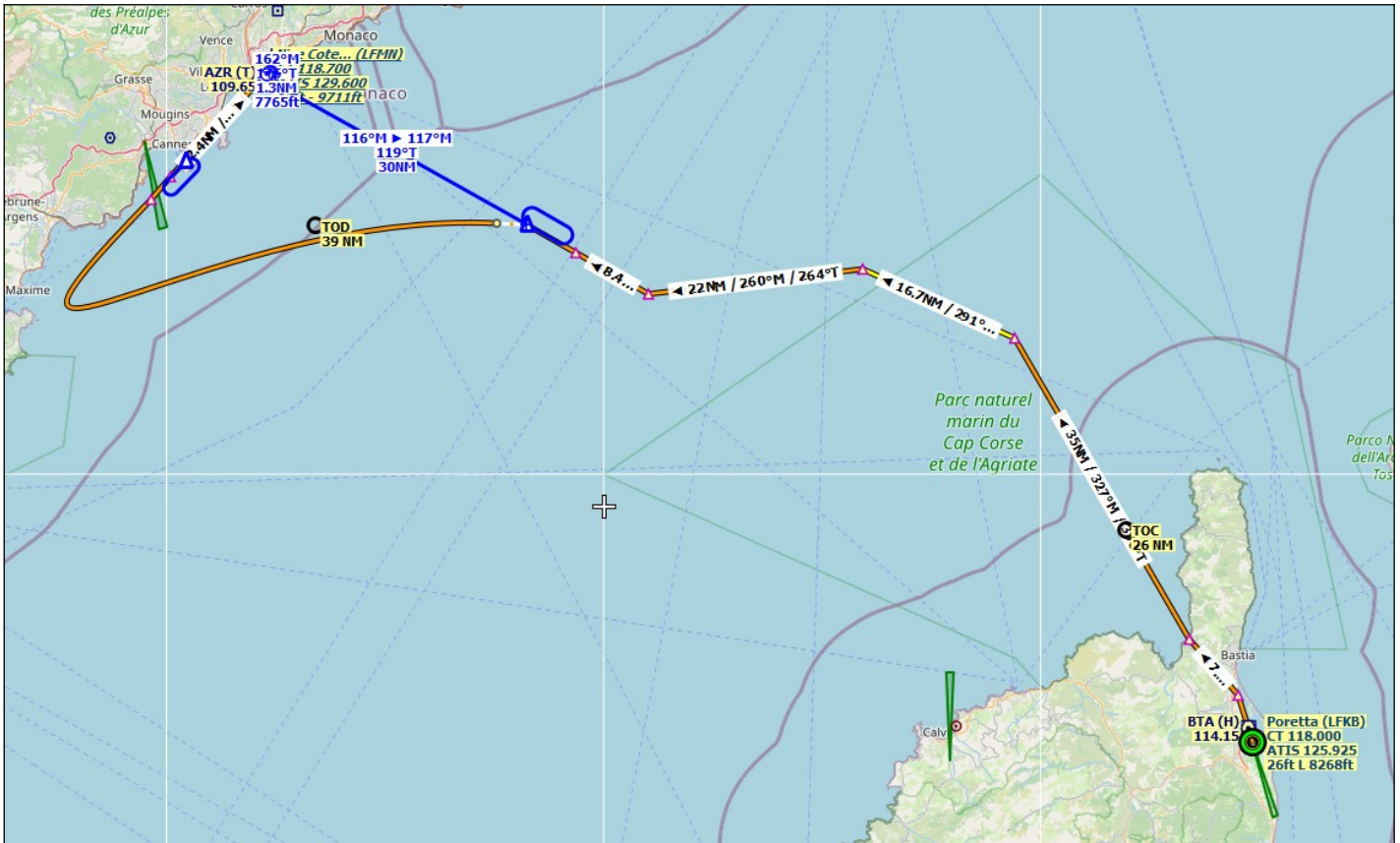
### OEFEENING : ATC procedure met App Holding en Missed Approach Holding

DEP **LFKB** RWY 34 SID **AKUT 2Q**

ARR **LFMN** RWY 04R STAR **KERI 7R** - ILS **04R NERAS** - 110.70 / 041° M GS 3.0° DME

ATC **Nice Approach** - Information **Echo**

Fair weather - LCT 12:00 at 19:30 - **FL120** - TA 6200 ft - TL 050 - PFL 4000 ft

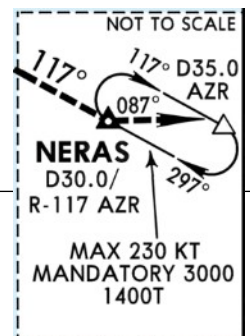


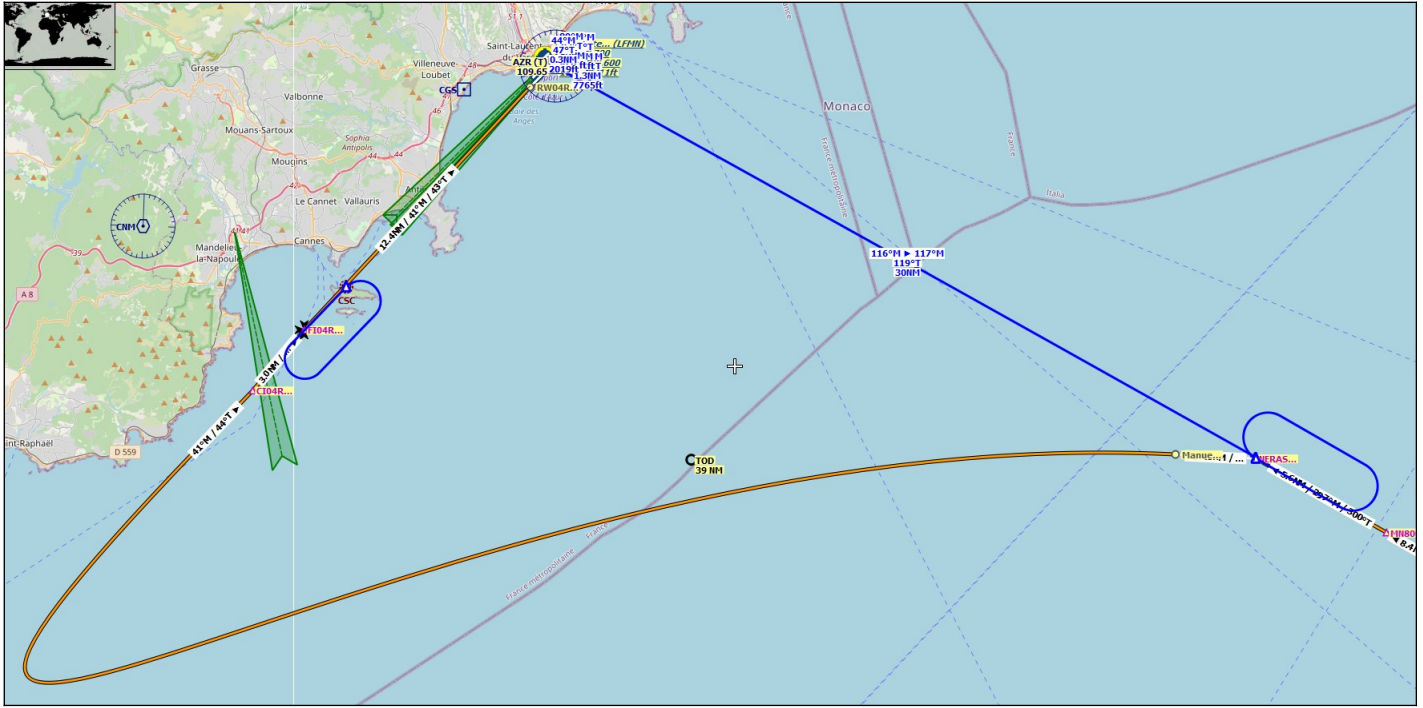
#### APP HOLDING **NDB CSC 385.0**

Right  
 041°  
 180 knts  
 1 min  
 3500 ft

#### MISSED APP HOLDING **▲ NERAS**

Right  
 297°  
 220 knts  
 1 min  
 3000 ft



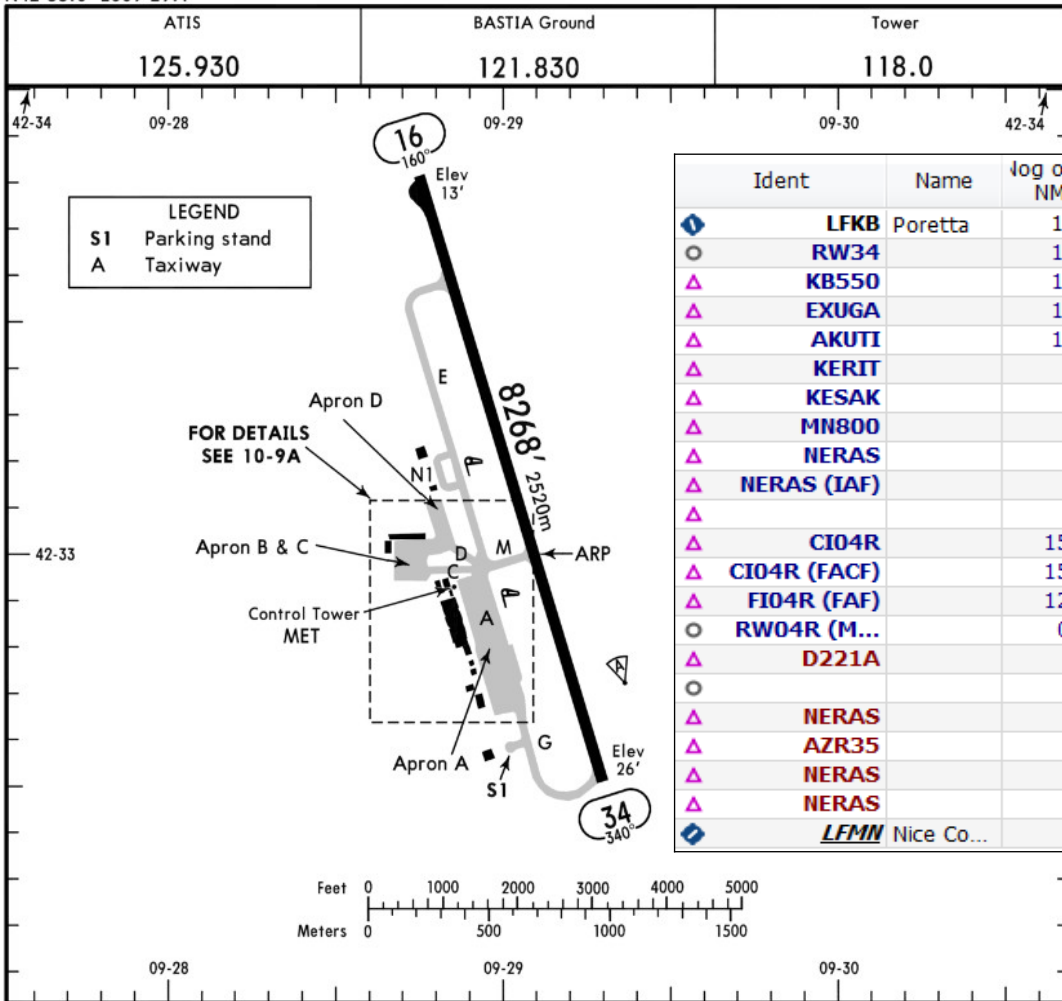


FLIGHTPLAN # BASTIA - NICE

**LFKB/BIA**  
 Apt Elev 26'  
 N42 33.0 E009 29.1

**JEPPESEN**  
 6 JAN 23 (10-9)

**BASTIA, FRANCE**  
**PORETTA**



LFMN/NCE

NICE/COTE D'AZUR

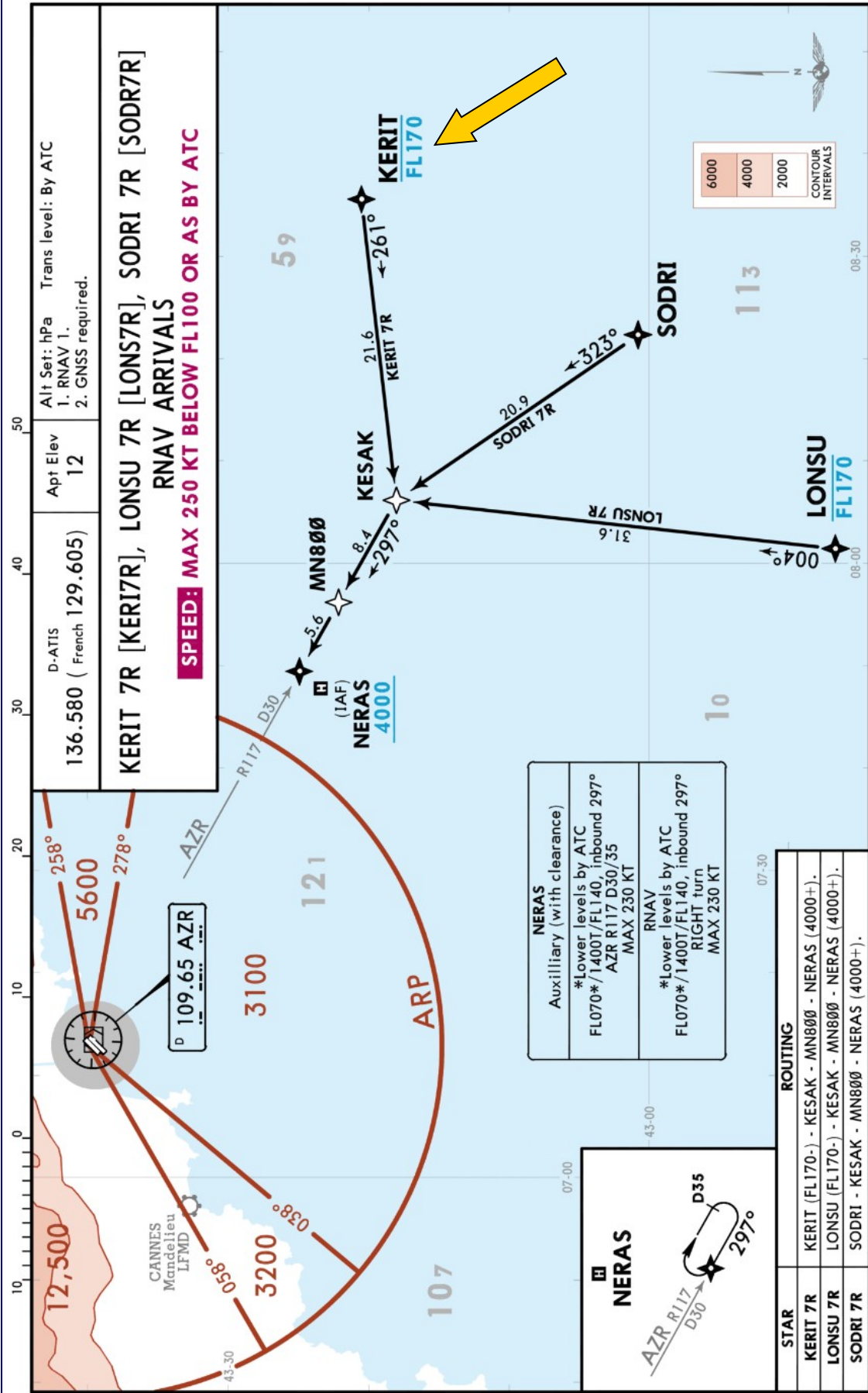
14 APR 23

10-2D

Eff 20 Apr

NICE/COTE D'AZUR, FRANCE

RNAV STAR



NAVIGRAPH CHARTS INTENDED FOR FLIGHT SIMULATION ONLY - NOT FOR NAVIGATIONAL USE

**LFMN/NCE**  
NICE/COTE D'AZUR

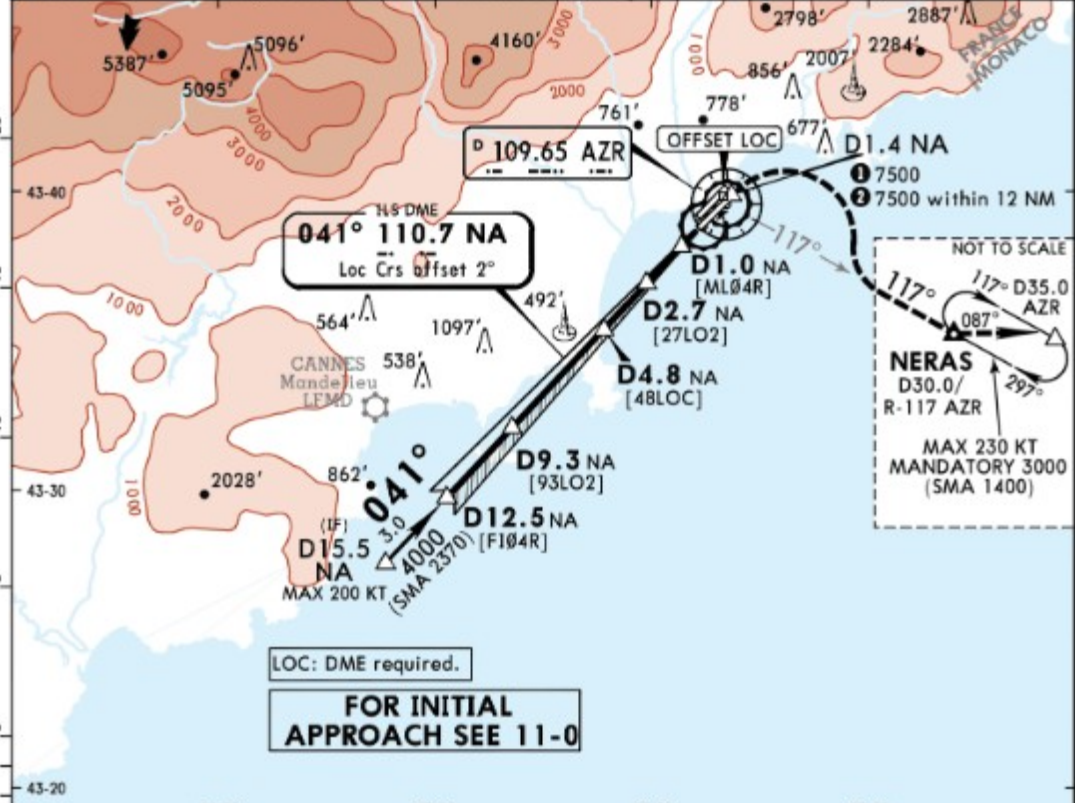
**JEPPESENNICE/COTE D'AZUR, FRANCE**  
23 DEC 22 **(11-3)** Eff 29 Dec ILS or LOC Rwy 04R

D-ATIS (French)	East	NICE Approach		NICE Tower		Ground
136.580 129.605	124.180	134.475	120.655	128.205	118.7 123.150	121.705

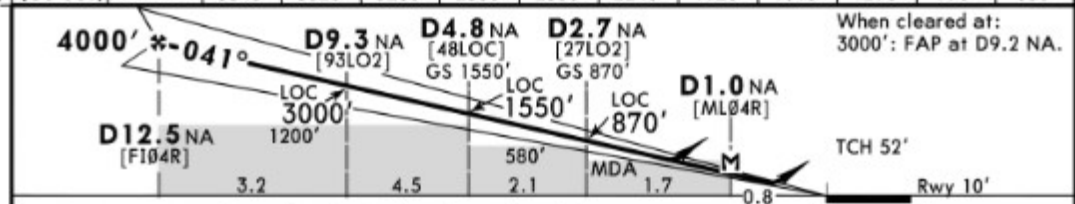
LOC NA	Final Apch Crs	D12.5 NA	ILS DA(H)	Apt Elev
110.7	041°	4000' (3990')	Refer to Minimums	12' Rwy 10'

**MISSED APCH:** Climb STRAIGHT AHEAD, at D1.4 NA turn RIGHT (MAX 200 KT) onto R-117 AZR climbing to 3000' to NERAS. At NERAS turn LEFT on 087° to join holding.  
Climb to 1200' prior to level acceleration.

Alt Set: hPa Rwy Elev: 0 hPa Trans level: By ATC Trans alt: 5000' MSA AZR VOR



LOC	NA DME	12.0	11.0	10.0	9.0	8.0	7.0	6.0	5.0	4.0	3.0	2.0
(GS out)	ALTITUDE	3840'	3520'	3200'	2880'	2560'	2240'	1920'	1610'	1290'	970'	650'



Gnd speed-Kts	70	90	100	120	140	160	REIL	Refer to Missed Apch above
ILS GS	3.00°	372	478	531	637	849	PAPI-R	
LOC Descent Angle	3.02°	374	481	534	641	855		

PANS OPS	<b>Standard</b>	STRAIGHT-IN LANDING RWY 04R		LOC (GS out)	CIRCLE-TO-LAND I	
	Missed apch climb gradient min 3.0%	ILS	Missed apch climb gradient min 2.5%			CDFA
	ABC: 260' (250')	DA(H) AB: 260' (250')	C: 360' (350')	DA(MDA)(H) 390' (380')	Max Kts	MDA(H) VIS
	DA(H) D: 270' (260')				110	770' (760') 3500m
A		RVR 1300m		135	1700' (1690') 5000m	
B	RVR 1300m		RVR 1700m	180	2420' (2410') 5000m	
C		RVR 1600m		205		
D						

ⓘ Circling height based on rwy 04R thresh elev of 10'.  
CHANGES: MSA, missed apch text. © JEPPESEN, 2016, 2022. ALL RIGHTS RESERVED.

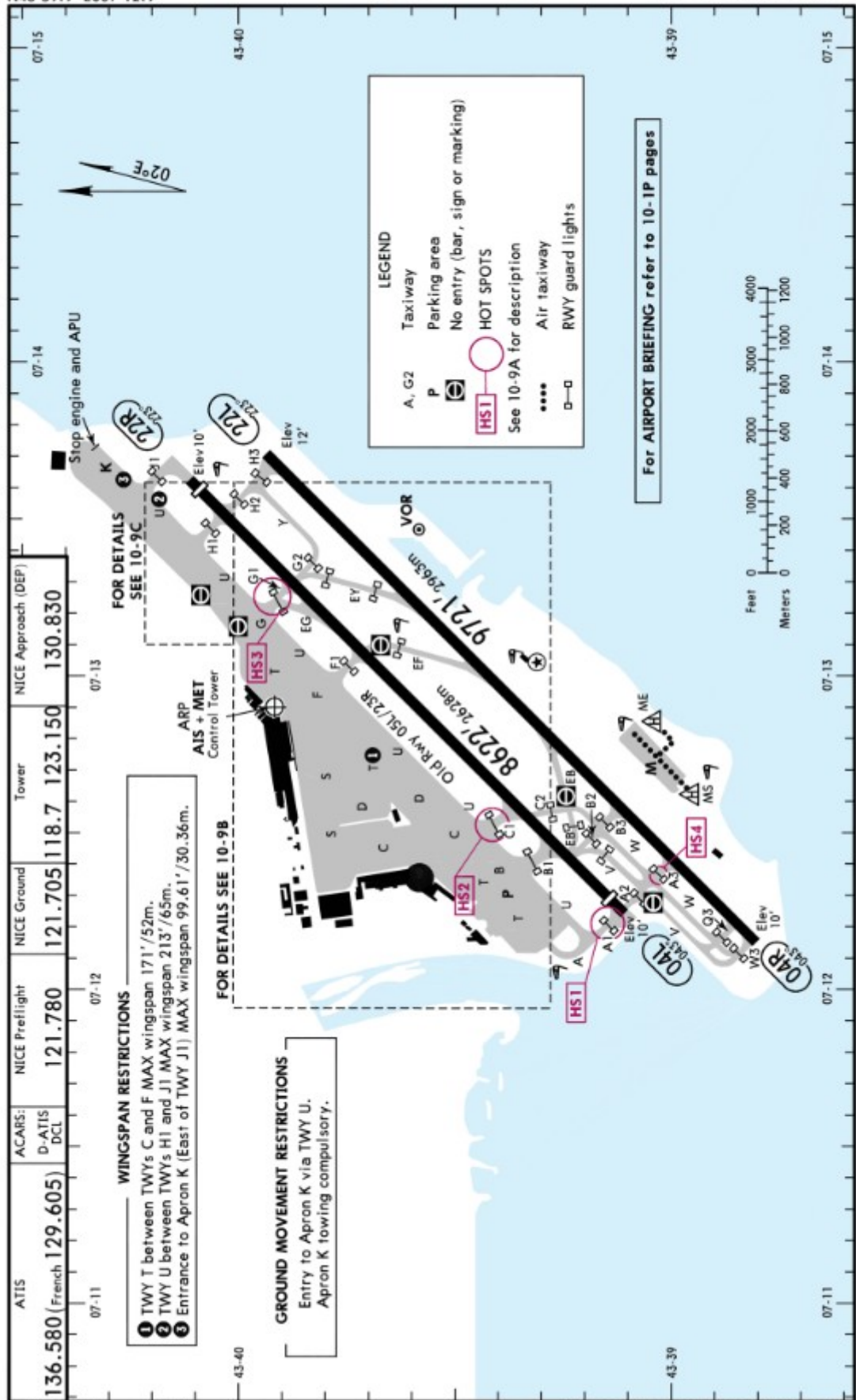
# LFMN/NCE

Apt Elev 12'  
N43 39.9 E007 12.9

# JEPPESEN NICE/COTE D'AZUR, FRANCE

10 JUN 22 (10-9) Eff 16 Jun

NICE/COTE D'AZUR



CHANGES: HS4 established.

© JEPPESEN, 2004, 2022. ALL RIGHTS RESERVED.

NAVIGRAPH CHARTS INTENDED FOR FLIGHT SIMULATION ONLY - NOT FOR NAVIGATIONAL USE